

Gold Road, Arizona

I had travelled the road between Oatman and Kingman as number of times before I realized that there had been a town in the area where the Goldroad mine now is. A google search turned up all sorts of old pictures and information and I wanted to match the pictures with the current situation. It took about half a year to get access to the area where the town was and the cemetery is but in September 2016 Jim and Judy Hinckley accompanied me on the trip that brought us to the area.

There is not much left of the town. In the late 1940's it was declared that a property owner should pay taxes on all buildings on his property so most buildings were torn down by the mining company, most of them were by then already abandoned.

What remained of the town is now for a large part buried underneath the gigantic piles of processed ore. All that is left is a few ruins on the side of the road and the remains cemetery.

Many hours were spent on this but I could not have done without the help of Neal Du Shane and the APCRP research team (<http://www.apcrp.org/> The Arizona Pioneer & Cemetery Research Project), Jim and Judy Hinckley and of course Google Maps.

All the photos were either found somewhere on the internet or I made them myself. If there are photos that you own and that you want to be taken away or want to be recognized for please do let me know. Also, if you have any additions or corrections please do let me know.

*A final request: The whole area is fragile in a lot of places and has been there a long time before we came to visit. Hopefully it will still be there a long time after we visit so please follow the old saying: **Take only memories, leave only footprints.***

Enjoy!

Dries Bessels

Dries@bessels.org / +31-6-44028-8346

Contents:

- The location of Goldroad
- Timeline of Goldroad
- Pictures then and now
- The cemetery
- A short biography of Henry Lovin

The location of Goldroad

Goldroad is in a canyon just beyond Sitgreaves Pass when traveling westbound from Kingman to Oatman on Route 66. The town was located between milemarker 26 and 28. The distance between Oatman and Goldroad is approx. 2.7 miles. The area is closed as it is no longer a place of habitation but an active goldmine.


A survey map of the region, Goldroad is roughly in the area of the number 11:



A claims map to show where the various mine claims are. Number 11 is the area of the Goldroad mine, any unclaimed land is owned/managed by the BLM (Bureau of Land Management):



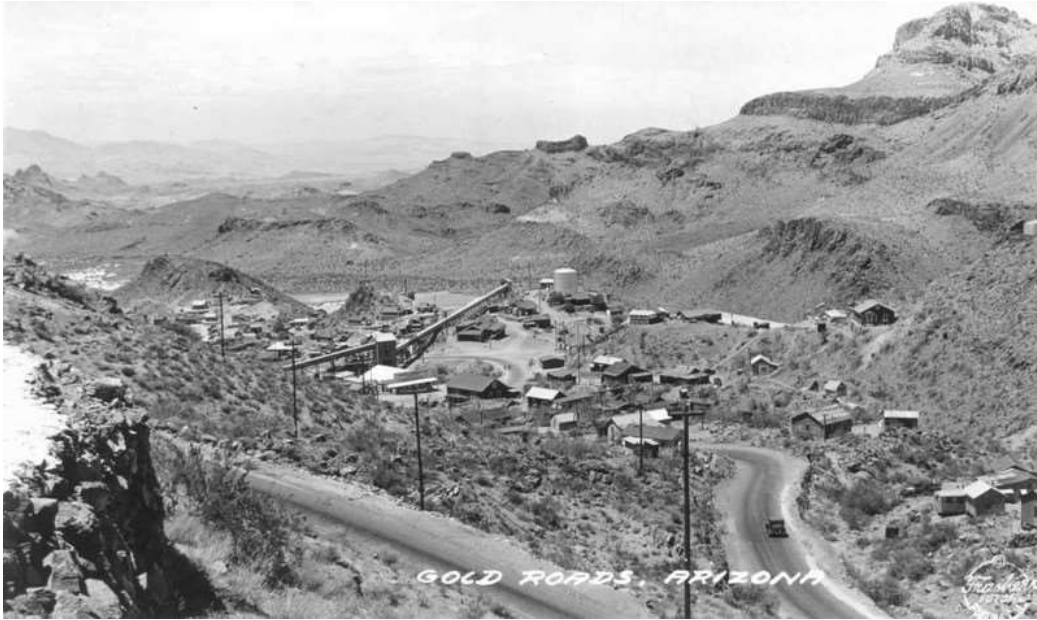
A timeline

October 1857	Lt. Edward Beale crosses the Sitgreaves pass close to where Goldroad would later be established.
Early 1858	Lt. Joseph Christmas Ives crosses the same pass and names it Lt. Lorenzo Sitgreaves
1864	John Moss found gold in the area but when silver was found in the Cerbat area he moved his diggings there
1899	Gold was found by Jose Jerez (also spelled Jerrez and Jerres), born in 1836 in Sonora, Mexico. The lot was located about 1.5 miles northwest of the Tom Reed mine in Oatman and rented from store owner Henry Lovin from Kingman for 12,80 \$.
1901	Lovin sold his lots for 50.000 dollars and used the money to start a successful freight company and the Colorado Club. Jerez drank his money away in a saloon owned by Lovin and afterwards went to work in the mine he himself founded.
April 15, 1902	Goldroad post office opened
1902	The Gold Road Mining and Exploration Company was formed to mine this area.
1902	The first known burial in the Goldroad cemetery is that of Henry Bailey who died of typhoid fever.
August 27, 1905	James Stevenson was shot to death by John Fitzpatrick in a quarrel. A news article noted that both were armed, but "Fitzpatrick was the more handy with the gun else there was something the matter with his antagonist's weapon." Stevenson is buried in Goldroad Cemetery.
September 7, 1905	Jennie Bauters, a local saloon owner and madam, was shot to death by her lover, Clement C. Lee, (Leigh) in the "Bad Lands" section of Goldroad.
August 10, 1906	 <p>Jose Jerez (seen here in Kingman) commits suicide by swallowing rat poison. He was buried in the Goldroad Cemetery and a monument was erected over his grave. This article from the <i>Mohave County Miner</i>, August 11, 1906, gives a few details: <i>"Jose Jerez, discoverer of the famous Gold Road mines, committed suicide at Gold Road by taking "Rough on Rats" (Poison Brand Name) . He lived several hours after taking the poison, suffering great pain. Henry Lovin departed yesterday to Gold Road to take charge of the funeral arrangement. Jerez was a captain in the Mexican Army, but tiring of army life many years ago immigrated to the United States, settling in the Salt River Valley. Coming to Kingman one day he struck Henry Lovin for a grubstake and getting it, departed to the Colorado River. While passing over the Blue Ridge chain of mountains he stopped to rest on the outcrop of what is now the Gold Road mines and carelessly picking up a piece of float found it was rich in gold . . . assays from the outcrop ran about forty ounces in gold to the ton . . . Within a short time Lovin and Jerez sold their interests for \$50,000. After getting the money Jerez entered on a life of debauchery and within a few years his money was all gone and he was again compelled to subsist on the grubstake for a living. Whatever may have been the shortcomings of Jose Jerez the giving to the world of the great Gold Road mines wiped clean the slate."</i></p>
June 18, 1907	Leigh, the murderer of Jennie Bauters, was hanged in Kingman. Ironically, both he and Jennie Bauters were buried in a mass grave when the old Pioneer Cemetery in Kingman was moved.
1907	The first veins stopped producing gold. The Gold Road Mining and Exploration Company had by then found gold in the value of 2.25 million USD but is closed down.
November 3 rd , 1909	<i>Mohave County Miner</i> , November 13, 1909. <i>"Cage Tender Meets Horrible Death. John Cassela, a cage tender at the Gold Road mine, met a horrible death yesterday afternoon. The man was accustomed to riding the cage from the 500 level to the collar, and in some unaccountable manner was caught in the timbers and killed. The cage coming up without him, the hoist man</i>

	<i>investigated and found one foot and shreds of flesh on the cage. A search party was sent down, but failed to find the body of the unfortunate man. As the chains at the 500 were open, it is believed that the body dropped from the cage to the sump at the 800 level. The pumps were at once started and the water has been reduced to within twenty feet of the 800. The sump will be drained sometime today and the body recovered."</i>
1910	The census lists 14 people with 6 miners and 1 doctor.
1911	The Goldroad mine is purchased by the 'Needles Smelting and Refining Company' and many new buildings are built including Lovin's Goldroad Club and Lovin's mercantile store.
1912	<i>Augustino Redolfi commits suicide and is buried in Goldroad Cemetery. The report from the Mohave County Miner, June 22, 1912: "Over at Goldroad . . . an Italian miner went into a small tunnel west of the Goldroad mine and shot himself to death with a shotgun, the charge entering his body below the heart and tearing a great hole through him. The man was missed the following day, but although search was made in the town, no one thought that he would have committed a rash act in the taking of his life. Monday afternoon some people noticed that buzzards were alighting near the entrance of the little tunnel, and went there to investigate and found the body. It was in a horrible condition owing to the heat in that place. Undertaker Van Marter was called to attend to the funeral of the unfortunate man and went out there and burial took place the following day. The man left a note stating that he was tired of living. It is stated that he made a big losing at poker and that a love affair were the primary causes of the man taking his life. He was aged about twenty-six years."</i>
December 8 th , 1915	One lingering mystery was the death of Eliza J. Estella Mead Azbill on Dec. 8, 1915. Her husband, Henry Azbill, was suspected of the murder of his wife. She, her husband, and another woman were driving up the old grade at Goldroad Hill in a wagon when the harness gave way, causing her to fall out and be run over by the wagon; or another account said the wagon rolled over the grade into the canyon, killing Eliza, who was buried at Mountain View Cemetery in Kingman. The other woman was badly injured. Henry and his brother were then charged a year later with murder of a man at Williams. They fled and were never caught. A relative said that one of the two brothers lived in San Diego and would wear sunglasses all the time, even at night!
1916	The known veins were nearly exhausted and the mine was closed.
1920	The census lists 23 people with 15 people related to mining and one prospector.
1922	The mine was used again for about 1 year.
1923	The gold veins start to dry up and mines are closed. By then 6.654.050 USD of gold was found in the area.
1924	The last known burials were of two infants, Santiago Higuera from cholera, and Baby Girl Sanchez, stillborn. Of the 37 documented burials, 18 were miners, 13 were children, 2 were suicides and 1 was a murder!
1930	The census lists 52 people with 22 people related to mining, 1 cowboy, 7 (!) garage owners, workers, mechanics and 2e farmers.
1937	The mines closed in 1937, after producing \$7.3 million.
1949	All mining is stopped and the town is shut down and razed to save money on taxes
October 15 th , 1942	Goldroad postoffice closes after the government ordered the mine to be closed by presidential order L-208. This was done so as to focus all mining resources on metals needed for WW2. The mill was dismantled and moved to Bayard in New Mexico to a zinc mine.
1950's	Route66 is bypassed with the I-40.
1992	Addwest Minerals purchases the Goldroad mine.
1995	Addwest reopens the mine and start excavating again. In 1995 it produced 16.000 ounces of gold
1996	The mine produces 40.000 ounces of gold
1997	The mine produces 36.500 ounces of gold
1998	Due to low goldprices the mine is shut down in the spring.
1999	The mine is opened for guided tours.
2007	The mine tours stop in May when Addwest started mining again.
2015	Following the low price of gold the mine is shut down in January.

Pictures then and now

What the town looked like from the Sitgreaves pass side:



Note in the above picture very distinctive mountain, shaped a bit like a saddle.



This is a perfect marker to compare old pictures to the current situation

And from the Oatman side:



Because the road has been rerouted it is sometimes difficult to find the exact same spot from where an old picture is taken but compare these pictures and you will see how much of the town has disappeared under the mountains of processed ore.



Just before you arrive in the Goldroad area you can see the remains of the old alignment (Old Trails Road) on the right hand side in the canyon:



Many of the old pictures must have been taken from that road as the view on the 'saddle mountain' cannot be accurately reproduced from the newer road.



Look closely and you can see the old culvert and guardrail still there



This photo shows where the centre of town was. In the front you can still see some of the ruins but in the back everything has disappeared under the processed ore.



Just before you arrive at what now is the entrance of the mine you will see the base for the large conveyor belt:



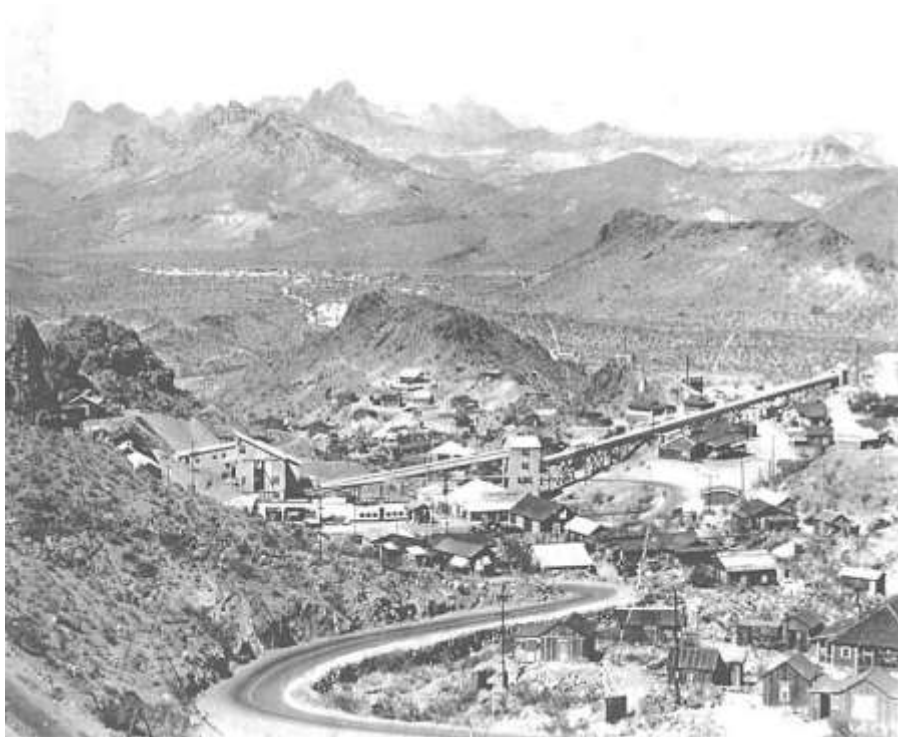
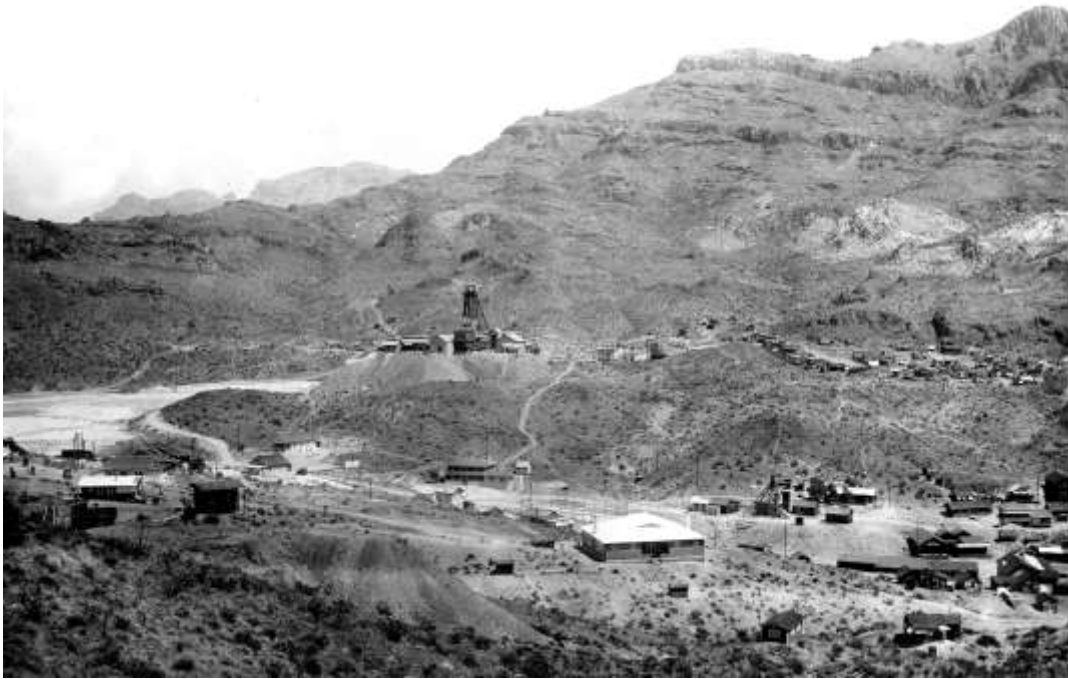
Next to that is what is left of Dunton's garage that once stood here:



Proof every now and then that this road can be dangerous!



Not much of the town is visible or recognizable anymore.



Remain of houses are everywhere though:





In early 2000's these buildings were still recognizable.



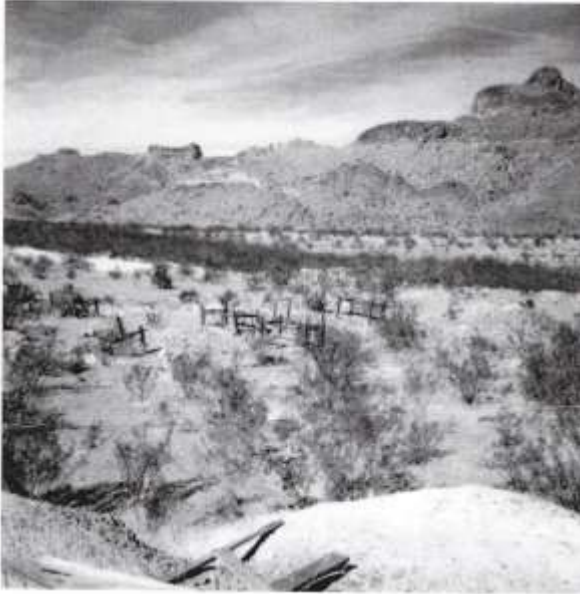
Specially the adobe 2 story building has had a rough time!



Goldroad cemetery

What really got me interested in the town of Goldroad were some pictures I found from the old cemetery:

The oldest ones I think (note 'saddle mountain' again in the background!)



And some of the graves and monuments





Neil du Shane (<http://www.apcrp.org/> The Arizona Pioneer & Cemetery Research Project) provided me some very important information on the cemetery, the exact location:



As you can see it is in the rear of the mining complex which is heavily guarded and fenced off. We managed to get there though and the trip there showed the extent to which the town has disappeared under the processed ore. An interesting trip though.

The numbers refer to the numbers with the photo's below



1 - At the entrance of the mine, note Saddle Mountain again



2 - Serious amounts of mining equipment



3 – Rough roads...



4 – In this picture you see on the left hand side the remaining wall of the town prison and on the right hand side the mountain of processed ore on top of the town.



5 – on top of the mountain of ore, the town is underneath it.



6 – The approach to the cemetery



7 – The cemetery from above



8 – The actual cemetery although it is sometimes hard to recognize it as such.



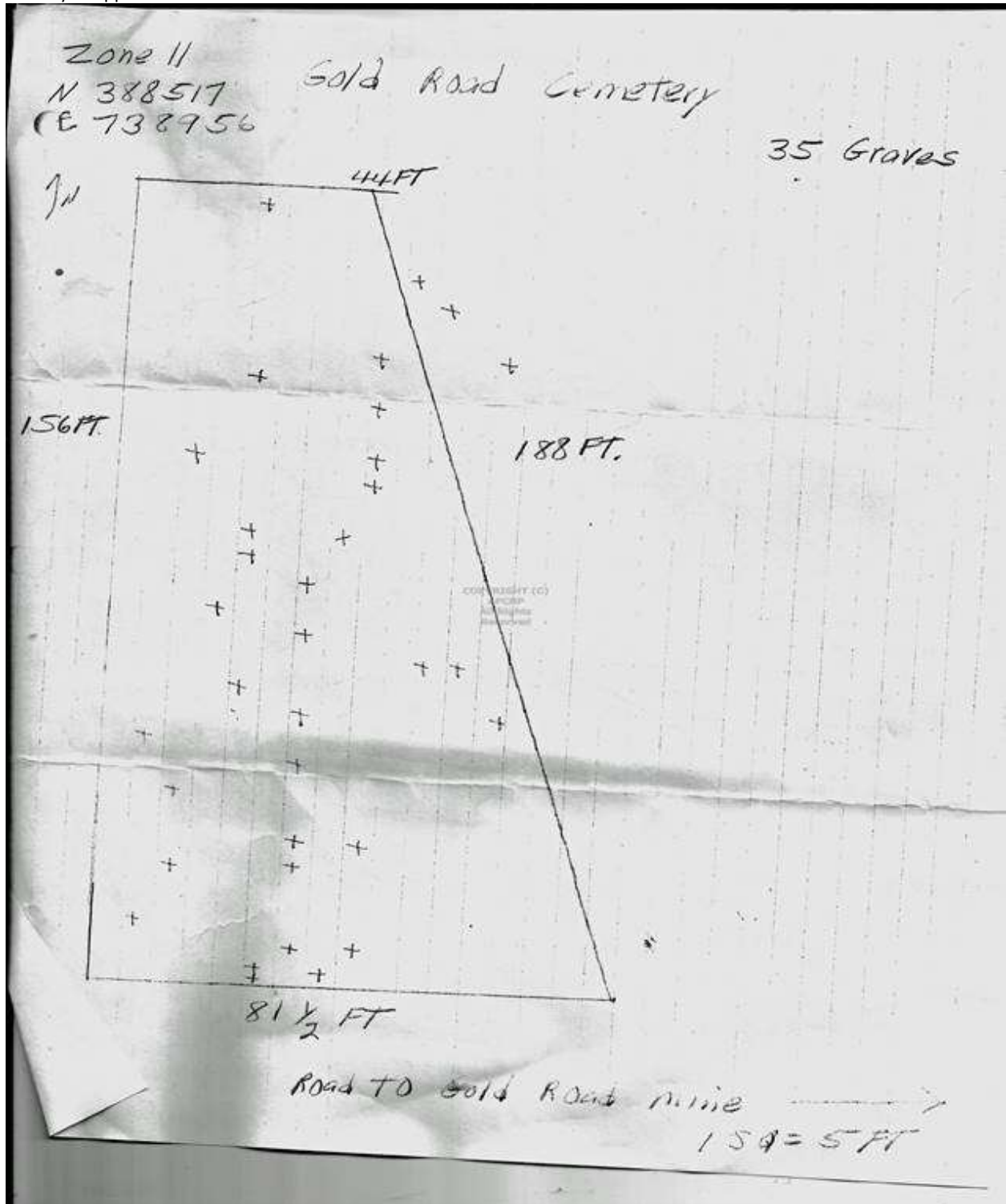




From the top of the mountain of ore with the two large basins from the gold mine, saddle mountain and the cemetery



A hand drawn map of the cemetery with the graves indicated. Specially the ones at the northern side of the cemetery have virtually disappeared.



The list of burials in the cemetery, copied from the APCRP website. For the latest version please consult the APCRP website.

GOLDROAD CEMETERY, Mohave County, Arizona							
http://www.apcrp.org/GOLDROAD/1_GOLDROAD_Rost_MAST_041915.htm							
Located one quarter mile NNW of Goldroad ruins @ N35 2 48.06, W114 22 46.87. Goldroad Mine currently (April 2015) closed - posted no trespassing. Accessing the cemetery on private property requires permission of the property owner.							
N35 2 59.50, W114 22 50.69 - Elev. 2,758							
Burials = 38							
REF	MKR	SURNAME	FIRST NAME	MIDDLE NAME	BIRTH DATE	DEATH DATE	COMMENTS
4		ANGLE	Frederick	R.	Aug. 26, 1906	Aug. 27, 1906	1 day old. COD: Broncho pneumonia. PAR: F. John Angle, M. Ellen Warton.
1,3,4	Y	AURELIA	F.	Edgar	1886	Oct. 21, 1913	Born Italy, Miner, single. COD: Electrocuted in mine blast, contact with high voltage wire, arm hit live wire when pulling watch from pocket to tell time.
1,4	Y	BAILEY	Harry		Sep. 9, 1866	Oct. 17, 1902	Single. COD: Typhoid fever. Bur. Acme (Original name of Goldroad.)
4		CAMPBELL	Edgar	Loyd	Aug. 4, 1909	Sep. 22, 1910	COD: Measles, broncho pneumonia. PAR: F. W.W. Campbell, M. Mary G. Fema. No undertaker, bur. by "Friends".
1,4	Y	CARLSON	John	C.	1874	Jul. 16, 1908	Miner, single. Age 34. COD: Killed by premature blast.
2,3,4		CASELA	John	"Sharky"		Nov. 12, 1909	Cage tender in Goldroad mine. COD: Caught in timbers riding cage from 500 ft. level to the collar, fell into sump.
3,4		CORTEZ				Jun. 28, 1910	Miner. COD: Cave-in while spudding first hole in Goldroad mine, caught under big drill bar. Walked around at first, badly injured, died the next night in company hospital. Bur: "In the graveyard below the town."

4		CRAIG	Don		Nov. 1, 1842	Dec. 19, 1911	Nurse at Goldroad hospital, married, wife Elizabeth. Immigrated 1861 from India. COD: Chronic myocarditis.
4		DICKIE	Baby Boy		Aug. 5, 1913	Aug. 06, 1913	1 day old. COD: Pulmonary aedema, prob. Malformed. PAR: F. Edward Hale Dickie, M. Clara Blanche Folz Dickie. Undertaker: None.
4	Y	ESTEVEZ	Teoleudo		1885	Oct. 14, 1913	Born in Spain, Miner, married. COD: Drilled into a "missed hole", killed by blasting.
1,3,4	Y	FARFARANO *	Egudio		1878	Feb. 04, 1910	*Name on DC not legible. News article spells name "Sarano" and "Safana". Internet rosters say "Farfarano"?. Born in Italy, Miner. COD: Fell into an ore chute that was undermined, gave way when walked on it buried by large amount of ore, neck and one leg broken.
4		FERRA	Edward	F.	Nov. 17, 1913	Nov. 26, 1913	COD: Premature. PAR: F. Alonzo Ferra Jr., M. Edith Richardson Ferra. Brother Edwin Ferra.
4		FERRA	Edwin	Jon	Nov. 12, 1912	Nov. 26, 1912	PAR: F. Alonzo Ferra Jr. M. Edith Richardson Ferra. Brother Edward Ferra.
3,4		FLINT	Baby Boy		Aug. 17, 1912	Aug. 17, 1912	Lv. 2 1/2 hrs. COD: Premature. PAR: F. Henry Flint, M. Edith Parker.
1,4	Y	FRESENRA	Lucillo		Nov. 30, 1880	Nov. 19, 1915	Miner, married. COD: Fractured spinal vertebrae, accidental.

1,3,4	Y	GRIVET	Peter		1874	Jun. 12, 1910	Miner, single. COD: Killed in Goldroad Mine. Working in stope, when shot fired to unclog stope, was standing on top and carried into the chute and buried under tons of rock. "A casket was sent from Kingman and the remains buried in the little cemetery at Goldroad."
4		HIGUERA	Santiago		Jan. 3, 1924	Jul. 15, 1924	COD: Cholera infantum. PAR: F. Perfecto Higuera, M. Petra G. Padilla.
1,3,4	Y	JERRES	Jose		1836	Aug. 10, 1906	Miner, discovered Goldroad Mine 1900. Suicide - rat poison. (Jerrez)
4		JOHNSON	Charles		1874	Jun. 16, 1908	Miner, single. COD: Premature blast at Vivian.
3,4		JUNGI	Gottfried		1867	Dec. 25, 1908	Manager, large shareholder, Pasadena Camp, Goldroad country. Born Switzerland, Married, wife Rosea. Naturalized 1894 Cal. COD: Shotgun that he was handling accidentally discharged, "tearing away the top of his head."
4		LAMSEN	Joseph		Jul. 3, 1904	Aug. 20, 1910	6 years old. COD: Broncho pneumonia. PAR: F. Louis Lamsen Erminia Miratti. Undertaker: friends.
1, 4	Y	LAVAJUINO	Tillie		Jan. 1, 1887	Nov. 09, 1907	Single. COD: Endocarditis.
1,4	Y	MACHETTI	Joe		1881	May. 12, 1913	Miner, married. COD: Skull fractured in mine accident, supposed to have fallen down raise in mine.
4		MARTOLINI	Tony		Nov. 25, 1912	Jul. 07, 1913	COD: No diagnosis, sudden death. Probable congenital malformation of heart. PAR:

							F. Dominick Martoloni, M. Mary. Par. Born in Italy.
1,3,4	Y	MILLER	Fred	Richard	1868	Jun. 14, 1909	Mining engineer, single. Born PA, COD: Mine accident at Pasadena Mines. He was in bottom of shaft when bucket of water being hoisted up 120 foot deep shaft came unhooked, fell back down shaft and struck him in neck and shoulder, breaking his neck, jaw, shoulder and leg, killed instantly.
4		MONTOYA	Dora	A.	Jun. 6, 1906	Oct. 14, 1906	COD: Marasmus."Colored." 3 mo old. PAR: F. Edward W. Montoya, M. Lolita C. DeBaca.
1,3,4	Y	NAYA	Adolfa		1882	Jul. 31, 1914	Born Spain, Miner, single. COD: Fell down ore chute in Goldroad Mine, many cars of ore dumped on him. Found missing after shift, then remains found in chute. "Undertaker Van Marter went out with a coffin and the remains will be buried in the Goldroad Cemetery."
1, 4	Y	REDOLFI	Augustino		1884	Jun. 16, 1912	Miner. COD: Suicide by gunshot.
4		SANCHEZ	Baby Girl		May. 2, 1924	May. 2, 1924	COD: Stillborn. PAR: F. Tom Sanchez, M. Speransa Turrsa.
1, 4	Y	SANDRI	John	R.	Sep. 20, 1889	Oct. 30, 1913	COD: Weak heart, accidental electric shock. PAR: F. Battista Sandri, M. Domenica Sandri.
4		SERINO	Eban		Jun. 17, 1913	Nov. 22, 1913	5 mo.old. COD: Eurero-colitis. PAR: F. Frank Serino, M. Cecilio Domingues.

1,3,4	Y	STEVENSON	James		1860	Aug. 27, 1905	Foreman, Goldroad Mine. Murdered by John Fitzpatrick, a discharged miner. The two men fought and Stevenson was struck and then threatened Fitzpatrick. "When they met again, both were armed, but Fitzpatrick was the more handy with the gun else there was something the matter with his antagonist's weapon."
4		TAGLIATO	John		1892	Jul. 29, 1912	Born in Italy, Miner, single. COD: Accidental deformed fracture of the skull.
4	Y	TARABU	Mariana	Rochon	Dec. 25, 1861	Feb. 4, 1916	Married, husband Charles. COD: Carcinoma of larynx, secondary syphilis.
4		VALDEZ	Antonio		Apr. 6, 1905	Mar. 25, 1915	COD: Acute TB, Malnutrition. PAR: F. Jesus Valdez, M. Mercedes Treveral.
1,4	Y	VANISSETTIE	Pete	Joseph	1884	Jul. 1, 1908	Miner, single. COD: Fell from bucket in shaft.
1,4	Y	VIGNA	James		1875	Mar. 16, 1907	Miner, married. COD: Explosion of dynamite in mine.
1,4	Y	WARE	John	Lee	Jul. 26, 1871	Nov. 24, 1911	Miner, single. COD: Accidental fall in the Goldroad Mine, internal injuries.
	19	38					
	Research by: Kathy Block						
	COD = Cause Of Death						
	PAR = Parents						
	DC = Death Certificate						
	Mkr = Marker or Headstone						
	REF.	<ol style="list-style-type: none"> 1. Headstone 2. Family Search 3. Newspaper 4. Obituary 					

Short biography of Henry Lovin

Henry Lovin was born July 22, 1867 in Rockingham, Richmond County, North Carolina, and died Dec. 29, 1931, from pulmonary edema and diabetes mellitus in Kingman. His first wife was Ruby Roe, 1874 to 1911. She died from acute toxemia of unknown origin and neurasthenia and left two children, Fannie and Elizabeth. She is buried in Kingman. Henry married again, to Cora Thompson of Louisiana, in 1923. He is buried in Mountain View Cemetery in Kingman.

Henry Lovin had varied business interests that included his stores, mines, cattle ranches, and had been elected twice as Sheriff of Mohave County and was a member of Arizona's Constitutional Convention. He was also elected twice as Democratic state senator. The 1913 *Who's Who in Arizona* compiled by Jo Connors, said:

"Mr. Lovin knows the people he represents, and their needs, enjoys their confidence and esteem, and he is especially interested in the welfare of the working people, and familiarly known as 'Friend of the Miner.' He has, in fact, helped many a man at a critical point, and thus enabled him to attain success, has financed some of the greatest projects in the State, and by his aid has made it possible for some of the great mines of Mohave, the gold-producing county of the north, to be developed.

A news article in the *Mohave County Miner*, October 28, 1905, tells about a hotel that Henry Lovin planned. A 1907 photo of "Goldroad Mining Camp" shows a two story building on the main street, and an article about Goldroad ghost town mentions the ruins of a two story building that "may have been a boardinghouse or hotel."

"H. Lovin is at Goldroad overseeing erection of a new hotel building. The structure is to be two stories in height, contain about 45 rooms. A hotel at the big gold camp will be of great convenience to the public, as at the present time lodgings are found to be hard to get."

J. Sam Withers was the partner of Henry Lovin in his mercantile business, beginning in December 1901. The Kingman Mercantile Company inventory in Kingman was divided among various firms in December 1901. Lovin and Withers took groceries and moved them into the former company storeroom. Withers had previously been mentioned in an 1898 news article as going East "buying goods for a gents furnishings store which he expects to open in Kingman next year." By 1900 the partners had stores in Kingman, Oatman, and Goldroad from 1900 to 1911, then the business seemed to be consolidated in a large store in Kingman, closing the other two stores.

J.S. Withers was a miner who owned the Lookout Mine. Allegedly, the "rock was literally laced together with gold." In 1905 he struck gold again when it was found in the Secret Pass-Blue Ridge section. Withers also was Treasurer and ex-officio tax collector for Mohave County, Arizona Territory, in 1908. By 1920 he was Clerk for the Board of Supervisors of Elections.

Lovin and Withers Company billed the Board of Supervisors in 1906 for reimbursement of expenses that included items such as: "Coal and supplies for court house and jail, \$170.98"; "Supplies for Geo, Hanson while searching for lost prospector, \$4.80"; "Supplies for John Hartman indigent, \$8.30."

Transportation to and from Goldroad was accelerated in 1905 by stage coaches, though the Mohave and Milltown railroad existed. Little freight was going from Needles to Goldroad and nearby Vivian, but was going to Kingman. There, according to a news article in the *Mohave County Miner*, Sept. 9, 1905:

"At the present time over one hundred horses are used in hauling freight into these camps from Kingman. Eight teams are constantly on the road and each team hauls from three to ten ton of freight. Besides the teams on this haul, there are teams hauling to other section that have to be diverted to this road whenever emergency demands. Besides these teams there is a four-horse daily stage to Gold Road and a two horse stage from that place to Vivian. Two livery stables with from forty to sixty team are in constant demand, many of which are run continually between this place and Gold Road and Vivian. Thousands of tons of freight go out to the Blue Ridge section yearly from Kingman, which is by far and away ahead of that going in from Needles. On the other hand we see no reason why Needles should not carry all freight into the Vivian section and a little effort on the part of the businessmen of the little city by the Colorado would bring the results. The train should be run daily over the Mohave and Milltown railroad and freight and transfer rates should be reduced. With freights as high as they are on the railroad, there is little wonder that operators get their supplies in some other way."

Henry Lovin's freight companies supplied mines and merchants in Goldroad. By the time of the 1930 census, showing garages and mechanics, the era of stagecoach deliveries and transportation in Goldroad was long gone. Lovin and Withers advertised tires for sale.

In 1949 the entire town of Goldroad was razed by property owners to save taxes on the structures! This was the last organized activity in the area until 1992. You can see the ruins from the highway, but they are posted, "No Trespassing." The ruins begin around mile marker 30 with foundations and excavations visible along the highway, the main ruins are at mile marker 26 to 28.